



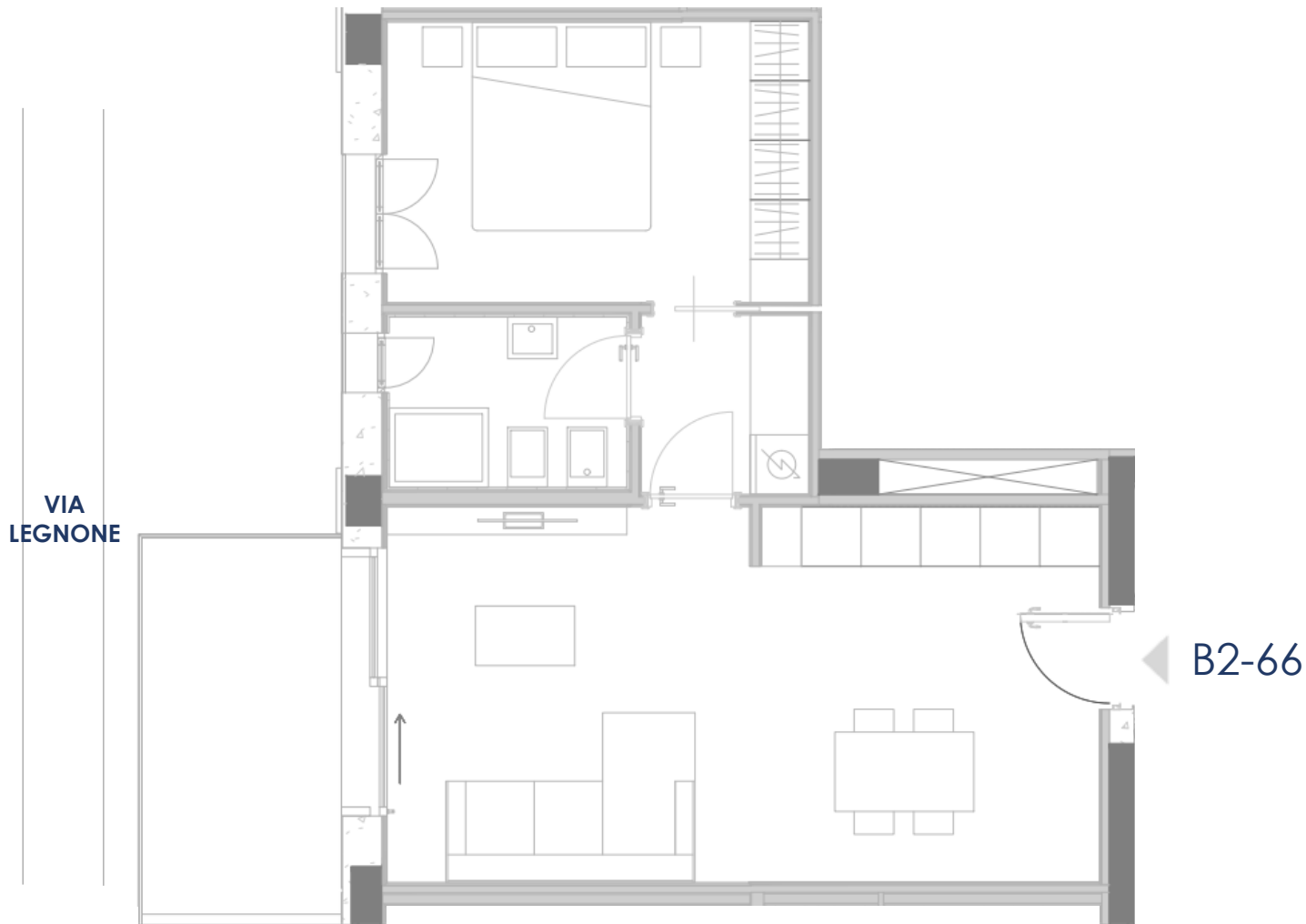
PLANIMETRIE  
ARREDATE



L  
E  
G  
N  
O  
M  
E  
  
32



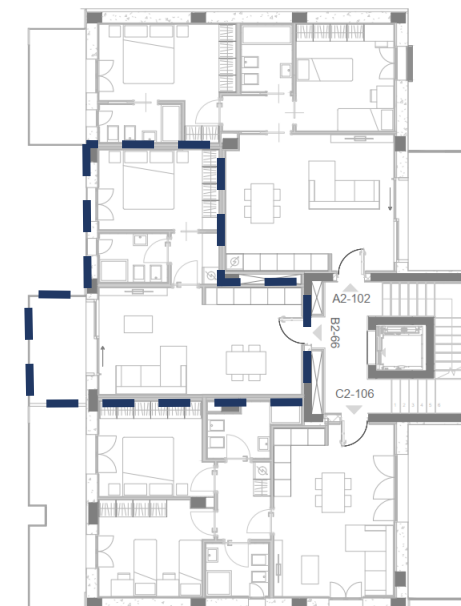
Riepilogo superfici (mq)	
Soggiorno	27,1
Cucina	
Cam. Matr.	12,0
Cam. 2	
Cam. 3	
Bagno 1	4,2
Bagno 2	
Lav./Rip.	
Disimpegno	3,0
Altro	
Muri interni	1,7
<b>Sup. Utile</b>	<b>48,0</b>
Muri perim. <b>100%</b>	8,4
Terrazzo <b>50%</b>	8,5
Terrazzo 2 <b>25%</b>	
Cantina <b>33%</b>	4,1
<b>Sup. Comm.</b>	<b>61,9</b>
Parti comuni	3,7
<b>Sup. Vendita</b>	<b>65,7</b>

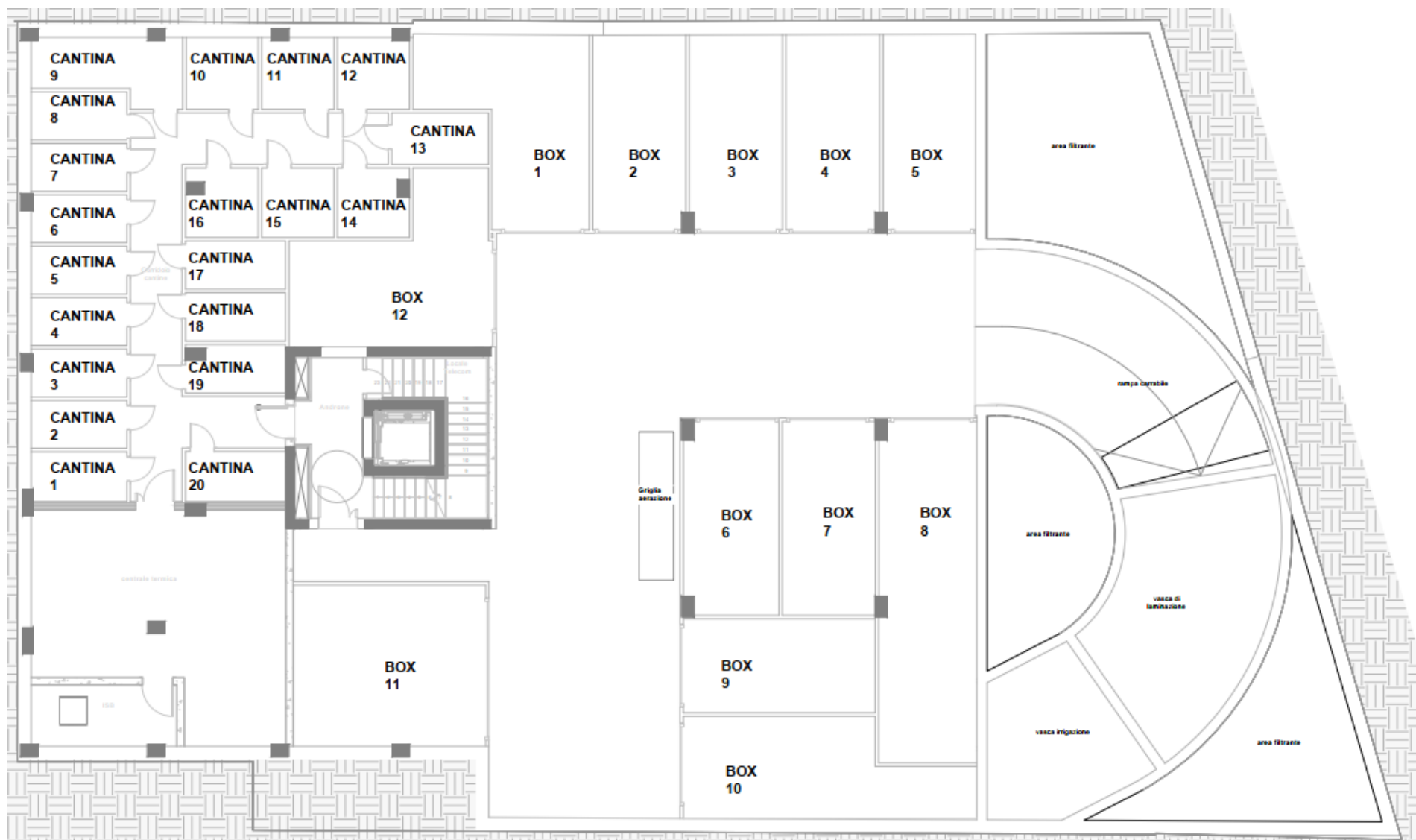


PIANO SECONDO

**BILOCALE B2-66**

**€ 367.000**



VIA  
LEGNONE



**MILANO**  
**VIA LEGNONE 32**

## **PER INFORMAZIONI**

---

Telefono: **+39 02 4944 2846**

---

E-mail: **info@legnone32.eu**

Sito web: **www.legnone32.eu**